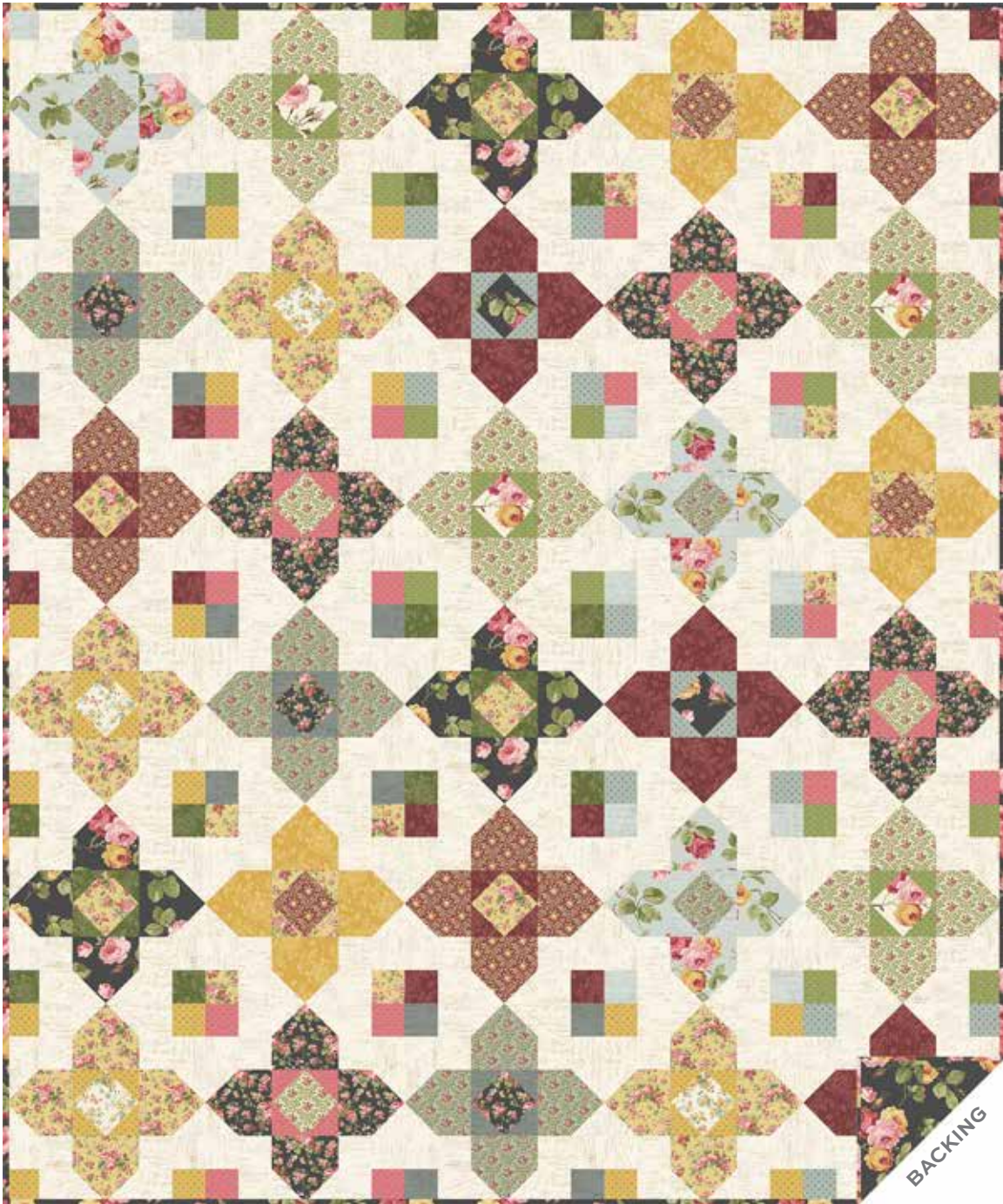


French Mill

ANDOVER FABRICS



Mille Fleurs Quilt designed by: **Janet Houts**

Quilt Size: **60" x 72"** • Skill Level: **Experienced Beginner**

Mille Fleurs Quilt

Introducing Andover Fabrics new collection: **FRENCH MILL** by Andover Fabrics

Quilt designed by Janet Houts

Quilt finishes 60" x 72"

30 Blocks: 12" x 12"

Enjoy the sweet image of a formal garden as you make this throw-size quilt. The floral prints blend nicely with the subtler tone-on-tone prints. Feel free to explore other combinations of prints to make this quilt uniquely your own.

Cutting Directions

Note: Read assembly directions before cutting patches.

All measurements are cut sizes and include 1/4" seam allowances. A fat 1/8 is a 9" x 20"-22" cut of fabric. A fat 1/4 is an 18" x 20"-22" cut. WOF designates the width of fabric from selvedge to selvedge (approximately 42" wide).

Fabric A & L From each:

Cut (12) squares 4 1/2"

Fabrics B, G, & I From each:

Cut (15) squares 4 1/2"

Fabrics C & E From each:

Cut (4) squares 4 1/2"

Fabric D

Cut (19) squares 4 1/2"

Fabric F

Cut (22) squares 4 1/2"

Cut (24) squares 2 1/2"

Fabric H

Cut (20) squares 4 1/2"

Fabrics J, M, N, & P From each:

Cut (24) squares 2 1/2"

Fabric K

Cut (12) squares 4 1/2"

Cut (24) squares 2 1/2"

Fabric O

Cut (120) rectangles 2 1/2" x 4 1/2"

Cut (360) squares 2 1/2"

Fabrics Q, R, & S From each:

Cut (32) squares 2 1/2"

Binding

Cut (7) strips 2 1/2" x WOF for binding

Backing

Cut (2) lengths 41" x 70", pieced to fit quilt top with overlap on all sides

Fabric Requirements

		Yardage	Fabric
Fabric A	blocks	3/8 yard	735-C
Fabric B	blocks	3/8 yard	735-K
Fabric C	blocks	fat 1/4	735-L
Fabric D	blocks	1/2 yard	736-K
Fabric E	blocks	fat 1/4	736-L
Fabric F	blocks	1/2 yard	736-Y
Fabric G	blocks	3/8 yard	737-C
Fabric H	blocks	1/2 yard	737-L
Fabric I	blocks	3/8 yard	737-R
Fabric J	blocks	fat 1/8	738-G
Fabric K	blocks	1/2 yard	738-R
Fabric L	blocks	3/8 yard	738-Y
Fabric M	blocks	fat 1/8	739-C
Fabric N	blocks	fat 1/8	739-C1
Fabric O	blocks	3 yards	739-L
Fabric P	blocks	fat 1/8	740-C
Fabric Q	blocks	fat 1/4	740-E
Fabric R	blocks	fat 1/4	740-G
Fabric S	blocks	fat 1/4	740-Y
Binding		5/8 yard	735-K
Backing		4 yards	735-K

Making the Quilt

1. Refer to the block diagrams for fabric combinations. The blocks use Side Units that are made with a quick stitch-and-flip method. Draw a diagonal line on the back side of a Fabric O 2 1/2" square. Position the marked square as shown on one corner of a 4 1/2" print square (Diagram 1). Stitch on the marked diagonal line. Cut away the excess fabric. Press the corner up.

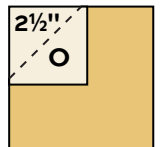


Diagram 1

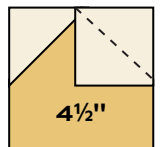
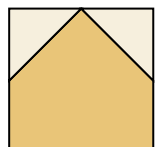


Diagram 2

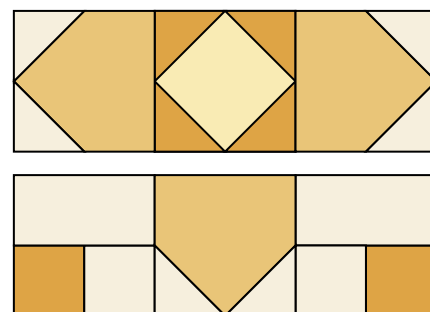
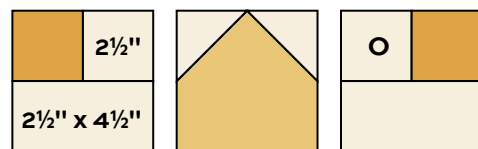
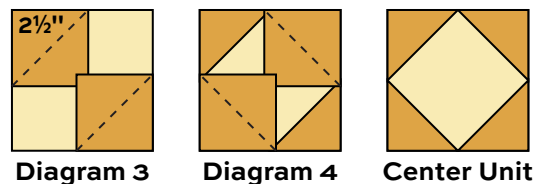


Side Unit

- Repeat this step on the adjacent corner of the square (Diagram 2). The unit should measure 4 1/2" square. Make the number of Side Units in the fabric combinations shown. Note that some fabric combinations require 16 Side Units alike for 4 blocks, and other combinations need only 12 Side Units for 3 blocks. Set these aside for later.

Mille Fleurs Quilt

- Center Units are made with a similar stitch-and-flip technique. Position and stitch $2\frac{1}{2}$ " squares on top of each remaining $4\frac{1}{2}$ " square (Diagrams 3 and 4). Make a center for each of 30 blocks.
- Referring to the Block Piecing, sew Fabric O square and rectangle patches to the appropriate $2\frac{1}{2}$ " print squares to make Corner Units. Arrange 4 Corner Units, 4 Side Units, and 1 Center Unit for each block. Be sure to orient the corner patches and Side Units as shown to duplicate the design. Once you are satisfied, join the units into 3 horizontal rows. Join the rows. Make the number of blocks in the fabric combinations shown.
- Referring to the Quilt Assembly, arrange the blocks in 6 rows of 5 blocks each, distributing the fabric combinations as you wish or as shown. Join the blocks into rows, and then join the rows.



Block Piecing – Make 30

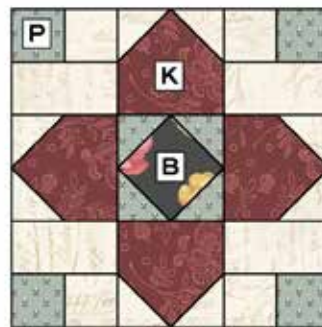
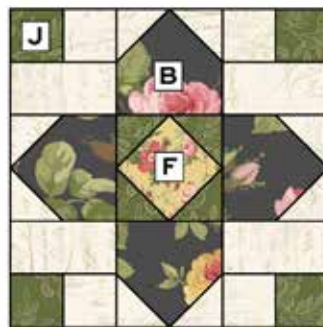
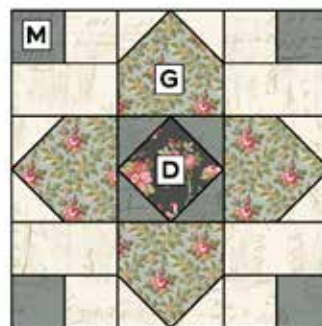
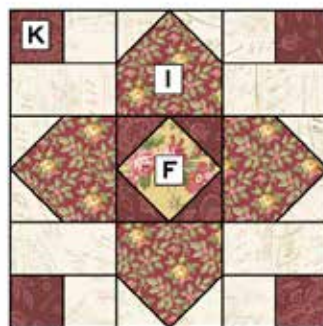
Finishing the Quilt

- Layer the quilt with batting and backing and baste. Quilt in the ditch around patches. Quilt around the printed motifs as you wish. Or, quilt an overall design. Bind to finish the quilt.

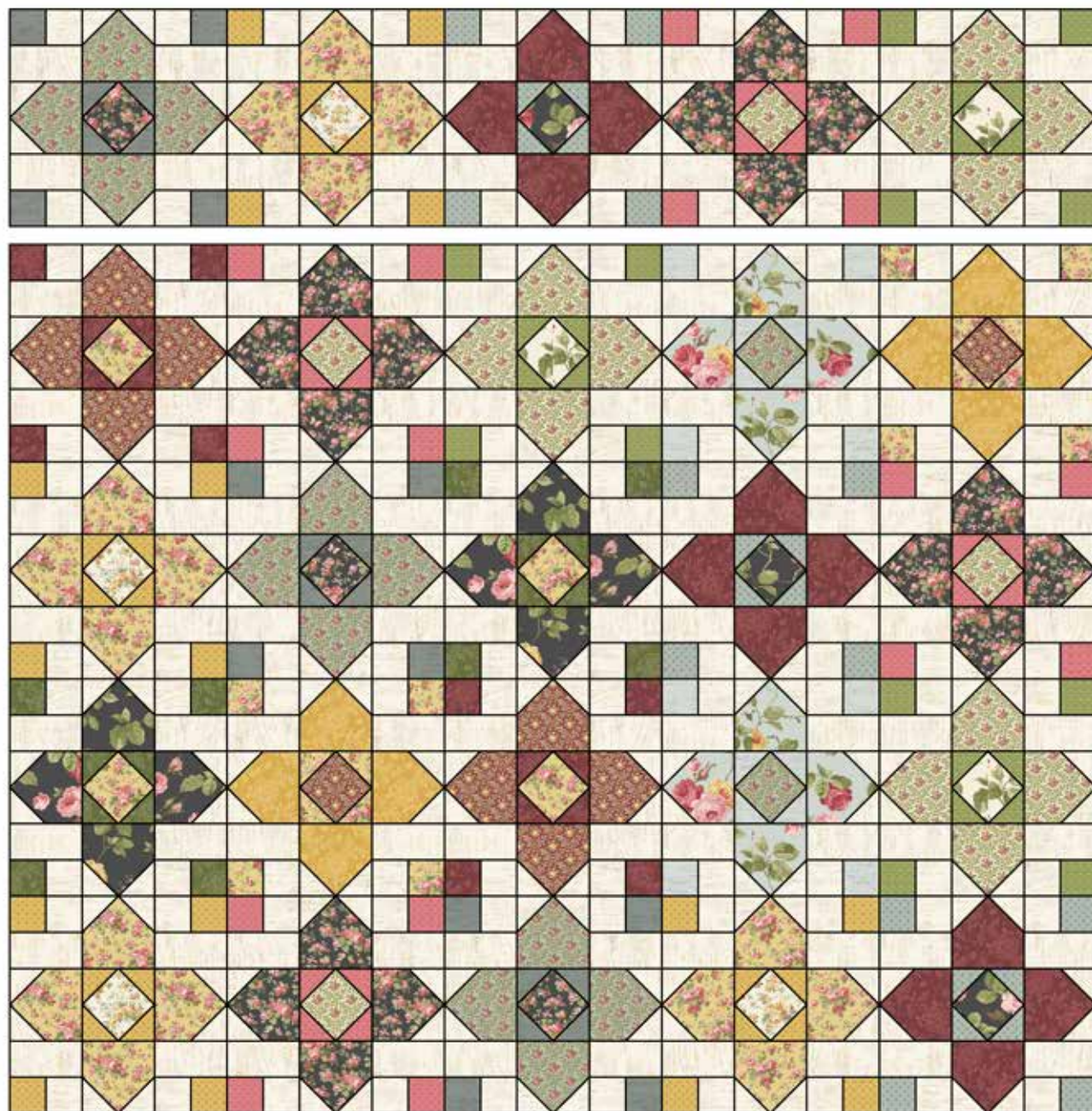
Make 4 each



Make 3 each



Mille Fleurs Quilt



Quilt Assembly

French Mill

ANDOVER FABRICS



735-C*



735-K*



735-L*



736-K*



736-L*



736-Y*



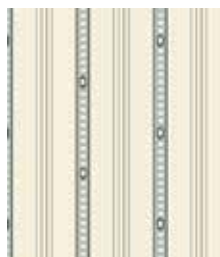
737-C*



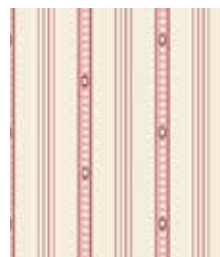
737-L*



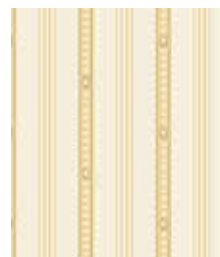
737-R*



741-C



741-E



741-Y



738-C



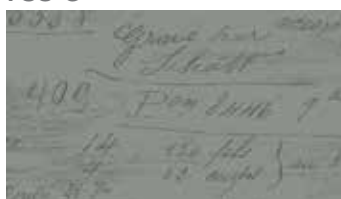
738-G*



738-R*



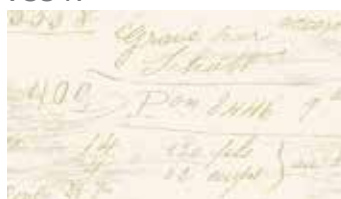
738-Y*



739-C*



739-C1*



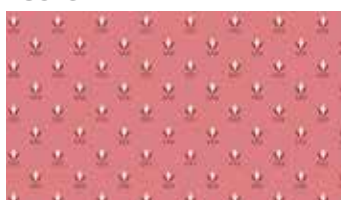
739-L*



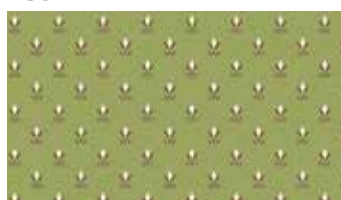
739-Y



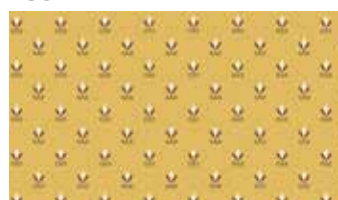
740-C*



740-E*



740-G*



740-Y*

*Indicates fabrics used in quilt pattern. Fabrics shown are 100% of actual size.